



**Greenfield Road**  
Spinney Hill, Northampton

**oriordanbond**  
SALES & LETTINGS



# Greenfield Road

Spinney Hill  
NN3 2LH

PRICE £250,000

Offered for sale with no onward chain is this extended three bedroom family home located within the popular area Spinney Hill. This home is ideally located within close proximity of schools and amenities as well as having good road links.

The accommodation comprises entrance hall, sitting room with feature bay window and open to dining room, kitchen and a conservatory. To the first floor are three bedrooms and a four-piece family bathroom. Outside is a gravelled driveway to the front providing off road parking. The rear garden is a generous size laid mainly to lawn with a feature pond and mature trees with access to a rear via a service road. Further benefits include uPVC double glazing and gas radiator heating. (C/1031/M)

### Additional information

- Council Tax Band: C
- Energy Efficiency Rating: D

### Viewing

Viewing strictly by appointment – details below

### Disclaimer

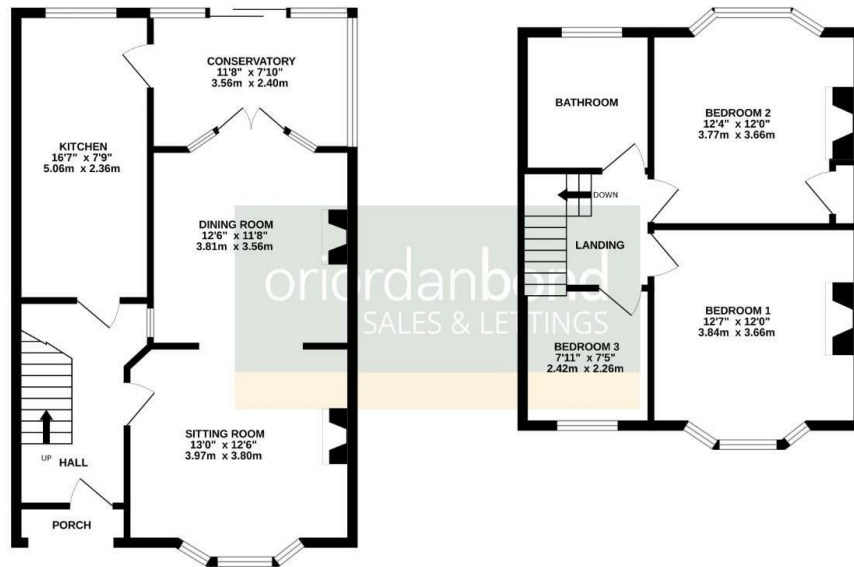
O’Riordan Bond Estate Agents Limited has not tested apparatus, equipment, fittings or services and so cannot verify they are in working order. The buyer is advised to obtain verification from their solicitor or surveyor.

O’Riordan Bond Abington East Sales  
01604 639007

abingtoneast@oriordanbond.co.uk

GROUND FLOOR  
591 sq.ft. (54.9 sq.m.) approx.

1ST FLOOR  
440 sq.ft. (40.9 sq.m.) approx.



TOTAL FLOOR AREA: 1031 sq.ft. (95.8 sq.m.) approx.

Whilst every attempt has been made to ensure the accuracy of the floorplan contained here, measurements of doors, windows, rooms and any other items are approximate and no responsibility is taken for any error, omission or mis-statement. This plan is for illustrative purposes only and should be used as such by any prospective purchaser. The services, systems and appliances shown have not been tested and no guarantee as to their operability or efficiency can be given.

Made with Metagix ©2025

